



# Powerful Support for Performance Management and Self-Assessment in Colleges of Further Education

See mini website – [www.improver.co.uk/WelcometoCollegeReview.html](http://www.improver.co.uk/WelcometoCollegeReview.html)

- facilitates regular assessment of Course Team performance using balanced scorecard principles.
- provides assessment of Department performance by bringing together Course Team scorecards.
- enables improvement action points to be defined and monitored at Course Team/ Department level.
- provides an integrated framework for self-assessment in the context of the Common Inspection Framework.
- integrates 'Every Child Matters' and enables input to Joint Area Reviews.
- helps achieve relevant quality standards including IIP, CIPFA Good Governance, Matrix, Charter Mark, etc.

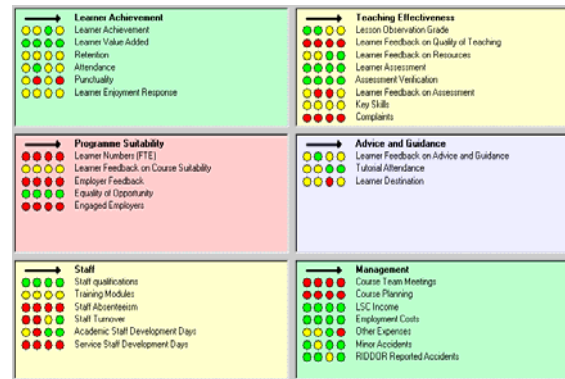
## Supporting Performance Management

A major feature within *COLLEGE REVIEW* is the Balanced Scorecard feature which has 6 perspectives that are set to support the Common Inspection Framework .

This feature sets out targets and performance in 'traffic light' format. There are templates which can be customised for Course Teams or the College. The processes used by Colleges are described overleaf.

The feature is designed to enable key College objectives to be cascaded down to course team level so that performance, with hard copy reports, is co-ordinated. It links to a College's management information system.

Within the Balanced Scorecard feature it is possible to compare the performance of course teams and produce scorecards for Departments which can also be compared.



**COLLEGE REVIEW provides an integrated performance management framework with a powerful visual impact**

## Supporting Self-Assessment and Improvement

*COLLEGE REVIEW* is based on 99 excellence criteria that are directly derived from the Ofsted Common Inspection Framework (CIF) and other relevant quality standards.

Entering the consensus views of staff across the College to the software saves considerable time. A click of the mouse will automatically produce reports showing strengths, improvements achieved, areas for further improvement and evidence against any of the quality standards.

An immediate priority is to integrate the criteria of the new Quality Mark and Framework for Excellence Excellence as soon as definitive criteria are available.

With staff involvement you will easily identify key areas for improvement. These can be prioritised into action points with the *COLLEGE REVIEW* action planning feature creating a range of integrated action plans

## Supporting Management of Change

Within *COLLEGE REVIEW* there is a feature to support SWOT analysis (strengths, weaknesses, opportunities and threats).

This removes the need for flip charts and provides an instant, prioritised report at the end of a team session.

## Pricing (all prices plus V.A.T.)

The first year annual licence fee for the College Review software is £1,000 without limit on computer use.

The annual licence fee for subsequent years is £1,000 for use on the first 10 computers, £1,250 on 11 – 20 computers, £1,500 on 21 – 35 computers, £1,750 on 36 – 49 computers and £2,000 on 50 or over computers.

In addition there is a one off first year fee of £750 to cover an initial introductory visit, a 1 day in College workshop for staff familiarisation, hands on IT training and IT co-ordination.

On-line and telephone technical support is free as is membership of the User Group.

## User Group

All Colleges that use *College Review* are members of the User Group which has validated the structure of the software and is now meeting at regular intervals to exchange experience, agree the processes for using the software and further develop it's features. Agreed upgrade costs may be shared by members of the User Group.

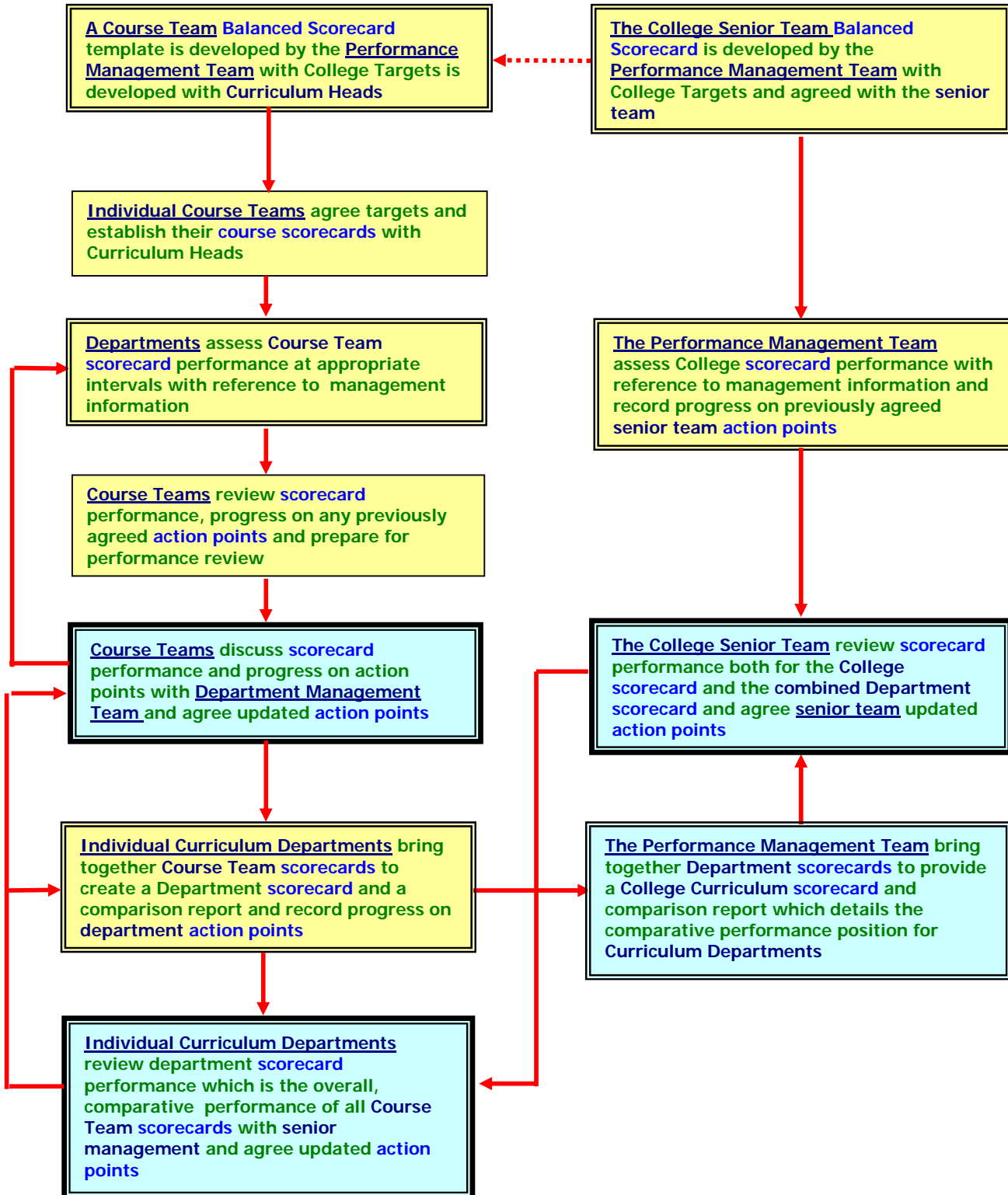
## Access to COLLEGE REVIEW

John Gurney, the Quality Manager of Grantham College is Chair of the User Group – 01476 400224, [jgurney@grantham.ac.uk](mailto:jgurney@grantham.ac.uk) and can be contacted by prospective users.

Anthony Darbyshire of ADA Assessment Solutions Ltd, who has developed *COLLEGE REVIEW*, can be contacted to demonstrate and discuss local use – 01777-711141, [ad@improver.co.uk](mailto:ad@improver.co.uk)

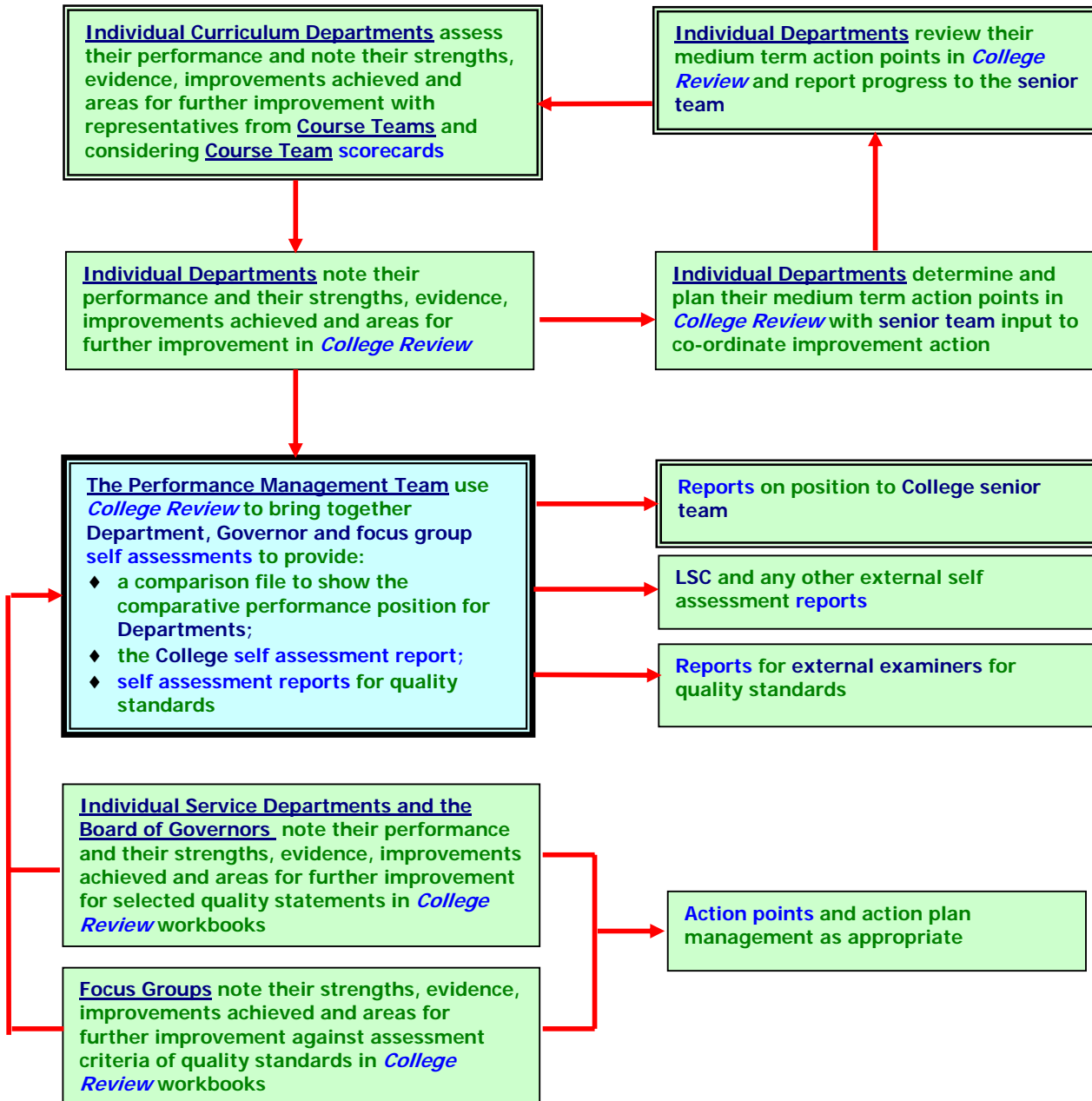


## How Colleges in the User Group is using the Balanced Scorecard feature in College Review to manage performance and improvement at Course, Department and College level





## How Colleges in the User Group is using College Review to manage self- assessment and medium term improvement at Course, Department and College level



### How the User Group is using the SWOT feature in College Review to manage change

